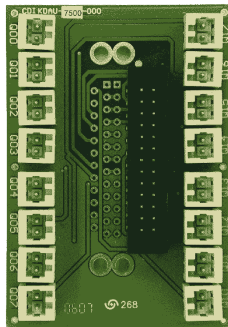


KDAU-7500 - IDC26/SUBD25 16 x NPN CONNECTION MODULE



DESCRIPTION

- Flat cable connection board for 16 NPN outputs
- Flat cable connection over IDC26, SUBD-25M or SUBD-25F (options)
- Designed as extension for KDVI-6000 output connection board

TECHNICAL INFORMATION

ELECTRICAL

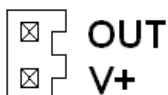
INPUT CONNECTORS OPTIONS

IDC026 or SUBD-25M or SUBD-25F													
PIN	14	15	16	17	18	19	20	21	22	23	24	25	
OUT	Q10	Q11	Q12	Q13	Q14	Q15	Q16	Q17	-	-	-	+V0	
KDIOx	5/0	5/1	5/2	5/3	5/4	5/5	RA9	RA10					
KDIOx	0/0	3/0	3/2	3/3	3/4	3/5	4/4	4/5					
OUT	Q00	Q01	Q02	Q03	Q04	Q05	Q06	Q07	-	-	-	-	+V0
PIN	1	2	3	4	5	6	7	8	9	10	11	12	13

- KDIOx - refer to signal when connected to KDVI-6000 board

OUTPUT CONNECTORS

- 16 x WAGO 733-332 - Q00-Q07, Q10-Q17



MECHANICAL

DIMENSIONS

- Dimensions: L 50mm X H 72mm
 - Option:
 - ◆ Conform for rail mount case for norms DIN EN 50022, DIN EN 50035 & DIN EN 50045
-