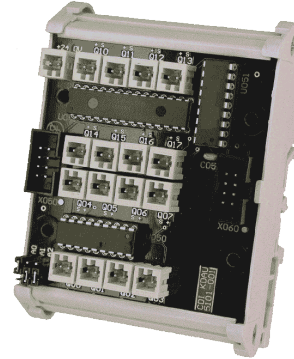
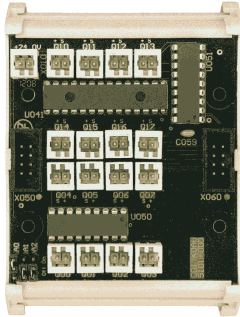


KDAU-5101-001 - 16 x OUTPUTS PNP 24VDC/0.5A MODULE



DESCRIPTION

- 8 PNP outputs 24VDC/0.5A module
- All outputs fitted with
 - ◆ WAGO 2 pins 733-332 connectors for direct load connexion
 - ◆ with NPN output, and +24V
 - ◆ Compatible cable connector WAGO 733-102
- Supply connector
 - ◆ WAGO 2 pins 733-332
 - ◆ Compatible cable connector WAGO 733-102
- KDIO Bus address selectable from 0 to 7

TECHNICAL INFORMATION

ELECTRICAL

KDIO BUS

- Address [0..7] selectable
- 2 x KDIO flat cable interconnection connector for up to 8 modules in cascade connections

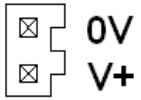
VOLTAGES & CURRENTS

- Absolute maximum voltage at NPN output 50V
- Maximal current 0.5A per output
- Total simultaneous output current for one 8 output channels group 2.0A
- Need external current protection

CONNEXIONS

SUPPLY

KDAU-5101-001 - 16 x OUTPUTS PNP 24VDC/0.5A MODULE



OUTPUTS



MECHANICAL

- Dimensions: L 67.5 X H 92.6
- Conform for rail mount for norms DIN EN 50022, DIN EN 50035 & DIN EN 50045

www.cdisa.ch

Rev 8 - 09 Jan 2009 - 18:19:50