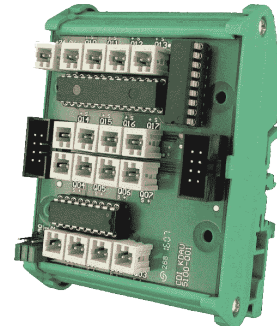
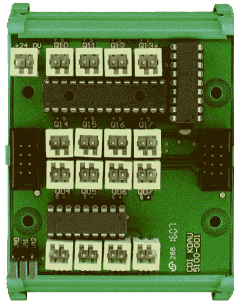


# KDAU-5100 - 16 x OUTPUTS NPN 24VDC/0.5A MODULE

---



## DESCRIPTION

---

- 8 NPN outputs 24VDC/0.5A module
- All outputs fitted with
  - ◆ WAGO 2 pins 733-332 connectors for direct load connexion
    - ◆ with NPN output, and +24V
    - ◆ Compatible cable connector WAGO 733-102
- Supply connector
  - ◆ WAGO 2 pins 733-332
  - ◆ Compatible cable connector WAGO 733-102
- KDIO Bus address selectable from 0 to 7

## TECHNICAL INFORMATION

---

### ELECTRICAL

---

### KDIO BUS

---

- Address [0..7] selectable
- 2 x KDIO flat cable interconnection connector for up to 8 modules in cascade connections

### VOLTAGES & CURRENTS

---

- Absolute maximum voltage at NPN output 50V
- Maximal current 0.5A per output
- Total simultaneous output current for one output channels group 2.5A
- Need external current protection

### CONNEXIONS

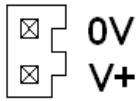
---

## KDAU-5100 - 16 x OUTPUTS NPN 24VDC/0.5A MODULE

### SUPPLY

---

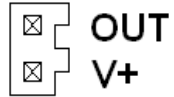
- WAGO 2 pins 733-332 for cable connector WAGO 733-102



### OUTPUTS

---

- WAGO 2 pins 733-332 for cable connector WAGO 733-102



### MECHANICAL

---

- Dimensions: L 67.5 X H 92.6
- Conform for rail mount for norms DIN EN 50022, DIN EN 50035 & DIN EN 50045