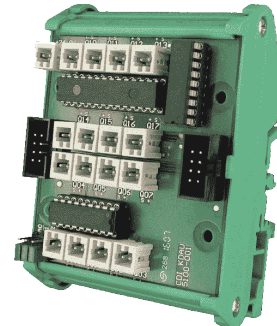
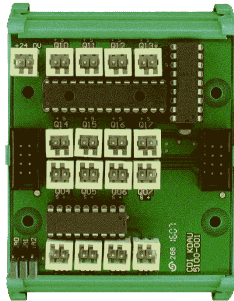


KDAU-5100 - 16 x OUTPUTS NPN 24VDC/0.5A MODULE



DESCRIPTION

- 8 NPN outputs 24VDC/0.5A module
- All outputs fitted with
 - ◆ WAGO 2 pins 733-332 connectors for direct load connexion
 - ◆ with NPN output, and +24V
 - ◆ Compatible cable connector WAGO 733-102
- Supply connector
 - ◆ WAGO 2 pins 733-332
 - ◆ Compatible cable connector WAGO 733-102
- KDIO Bus address selectable from 0 to 7

TECHNICAL INFORMATION

ELECTRICAL

KDIO BUS

- Address [0..7] selectable
- 2 x KDIO flat cable interconnection connector for up to 8 modules in cascade connections

VOLTAGES & CURRENTS

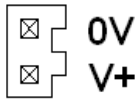
- Absolute maximum voltage at NPN output 50V
- Maximal current 0.5A per output
- Total simultaneous output current for one output channels group 2.5A
- Need external current protection

CONNEXIONS

KDAU-5100 - 16 x OUTPUTS NPN 24VDC/0.5A MODULE

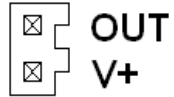
SUPPLY

- WAGO 2 pins 733-332 for cable connector WAGO 733-102



OUTPUTS

- WAGO 2 pins 733-332 for cable connector WAGO 733-102



MECHANICAL

- Dimensions: L 67.5 X H 92.6
- Conform for rail mount for norms DIN EN 50022, DIN EN 50035 & DIN EN 50045