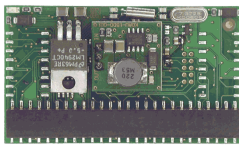


# MATERIEL KODITEC®

- Les produits KODITEC® offrent une solution économique et compacte pour le contrôle de tous vos équipements
- Des modules standards ou adaptés à vos besoins communiquant entre eux et vers l'extérieur par **RS232**, **CANbus** et par **Ethernet**
- Une riche bibliothèque de fonctions Automate, de communication, et bien plus ...
- Fonctions de Télémaintenance

## PROCESSEURS

KDAU-2014

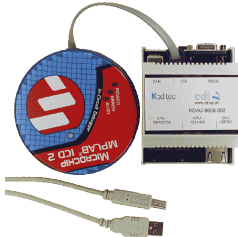


KDAU-2700



## MODULE DE PROGRAMMATION

KDAU-9998



## COMMUNICATION ETHERNET INTERFACE BUS

KDAU-2200

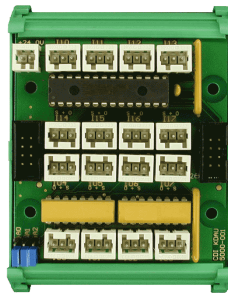


## TERMINAUX

KDAU-3000

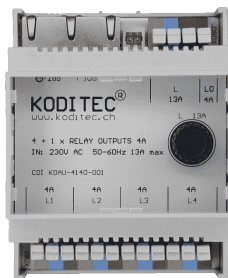
## ENTREES LOGIQUES

KDAU-5000

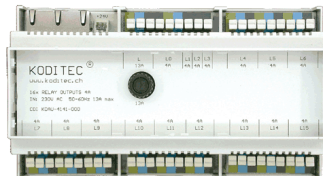


## SORTIES LOGIQUES

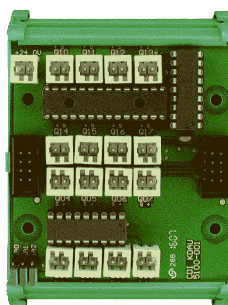
KDAU-4140



KDAU-4141



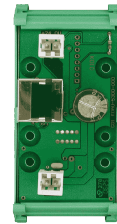
KDAU-5100



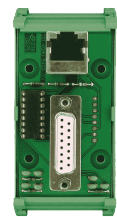
KDAU-5101

## GESTION MOTEURS

KDAU-5300

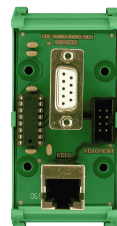


KDAU-5400



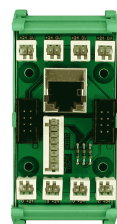
## COMMUNICATION RS232

KDAU-5600



## TETE DE BUS

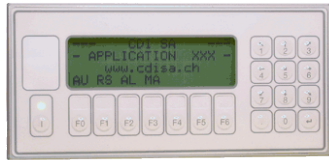
KDAU-5900



## MODULE DE CONNEXION

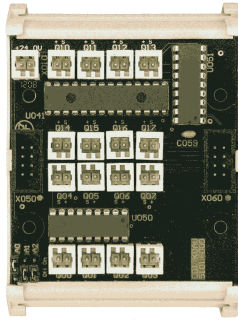
KDAU-7500

**MATERIEL KODITEC®**



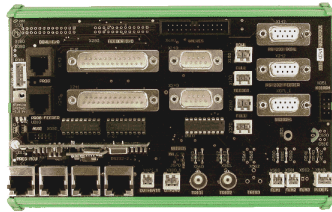
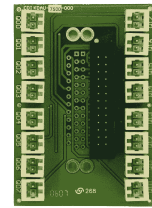
**MODULE VISION**

KDV1-6000



**E/S LOGIQUES**

KDAU-5200



**MODULE ANALOGIQUE**

KDAU-5500

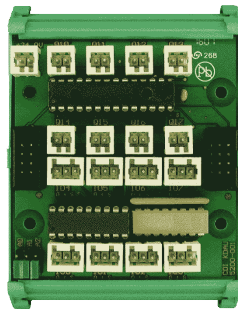
PHOTO NOT



AVAILABLE

**MODULE TEMPERATURE**

KDAU-5800



KDAU-5201

